

FOR SPONSORS

Category of Sponsorship	Sponsorship Fee		Privilege/s
	Overseas	India	
Diamond	US \$12,000 and above	₹ 5.00 lakhs and above	30 minutes presentation and nomination of 5 free delegates
Platinum	US \$10,000	₹ 4.00 lakhs	20 minutes presentation and nomination of 5 free delegates
Gold	US \$ 5,000	₹ 2.00 lakhs	10 minutes presentation and nomination of 3 free delegates
Silver	-	₹ 1.00 lakh	Nomination of 2 free delegates

PARTICULARS FOR E-PAYMENT

Name of the account : APCWE-VIII, INDIA
 Account No. : 32812163603
 IFSC : SBIN0010673
 MICR code : 600002130
 Branch : State Bank of India,
 Taramani, Chennai 600 113, INDIA
 Branch code : 010673
 SWIFT code : SBININBB475

For DD, in favour of "APCWE-VIII, INDIA" payable at Chennai.

CONFERENCE VENUE

Hotel Green Park
 183, N.S.K. Salai, Arcot Road
 Vadapalani, Chennai 600 026,
 Tamil Nadu, India
 Phone: +91 44 6651 5151
 FAX : +91 44 2375 7677
www.hotelgreenpark.com

TRAVEL: Chennai has an International airport which is very well connected to all parts of the city. All other exciting details will be made available shortly on the website.

ENCHANTING CHENNAI:

Tamil Nadu constitutes the south-eastern extremity of Indian peninsula. Chennai is the capital city of the State, besides being an important district. The district city is one of the metropolis of India, and serves as the gateway of the culture of South India. In spite of being the capital of a Tamil speaking State, it has emerged as a cosmopolitan city playing an important role in the historical, cultural and intellectual development of India, representing still the distinct components

of the highest form of Dravidian civilization. In addition, it holds out an interesting fair of South Indian architecture, music, dance, drama, sculpture and other arts and crafts. Chennai is situated on the north-east end of Tamil Nadu on the coast of Bay of Bengal. It lies between 12° 9' of the northern latitude and 80° 12' and 80° 19' of the southern longitude on a sandy beach. It stretches nearly 25.60 km along the Bay Coast. This is the second longest beach in the world. Located on the east coast of India, the city has rich cultural heritage, temple architecture and historic importance. The city is popular for its extreme treasure of tourist attractions. The temperature during the month of December will be a pleasant 20°C to 24°C.

CONTACT

Dr. Nagesh R Iyer
 Chairman, APCWE-VIII, & Director

CSIR-STRUCTURAL ENGINEERING RESEARCH CENTRE
 (Council of Scientific and Industrial Research)
 CSIR Campus, CSIR Road, Taramani,
 Chennai 600113, INDIA.

Tel : +91 44 22542139, 22549201

Fax : +91 44 22541508

E-Mail : apcwe8@serc.res.in
apcwe8@gmail.com

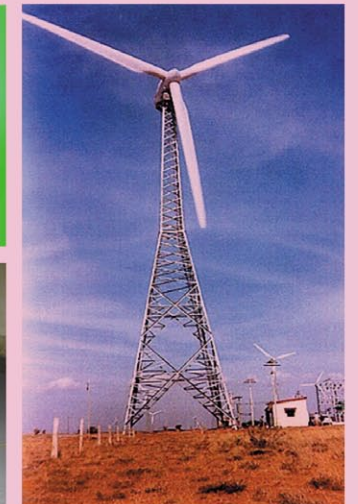
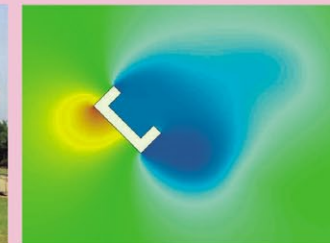
Website : <http://apcwe8.serc.res.in>

EIGHTH ASIA-PACIFIC CONFERENCE ON WIND ENGINEERING

APCWE-VIII
 December 10 - 14, 2013
 Chennai, INDIA



Organised by
CSIR-Structural Engineering Research Centre
 Chennai, INDIA



In cooperation with



INTERNATIONAL ASSOCIATION
 FOR WIND ENGINEERING (IAWE)



INDIAN SOCIETY FOR
 WIND ENGINEERING (ISWE)

wind
engineering
research

mitigating
DISASTER

TAMING WIND

ABOUT THE CONFERENCE

The 8th Asia-Pacific Conference on Wind Engineering (APCWE-VIII) will be held during 10-14 December, 2013, at Chennai, India, organized and hosted by CSIR-Structural Engineering Research Centre. CSIR-SERC is privileged to host the APCWE-VIII, and is enthusiastic about conducting the same with full dedication to the cause of enhancing the knowledge of wind for the benefit of mankind and the environment.



KEY DATES

4- page extended abstract due	31 st May, 2013
Notification of acceptance	14 th June, 2013
Full-length paper and final version of extended abstract due	30 th August, 2013
Early Bird registration due	13 th September, 2013
Registration due for publication	4 th October, 2013
Online registration close	29 th November, 2013
Conference (On-Site Registration)	10 th - 14 th December, 2013

REGISTRATION

The registration fee for participants / delegates are listed in the table below:

OVERSEAS - REGISTRATION FEE

Participant	On or before 13 th Sep. 2013	After 13 th Sep. 2013
Regular	US \$ 450	US \$ 500
Full-time Student	US \$ 225	US \$ 250
Accompanying Person	US \$ 150	US \$ 150

SAARC COUNTRIES (figures in INR ₹)

Participant	Fee
Full-time Student	₹2,000
ISWE Member	₹6,000
Professional	₹8,000

As an author, the registration process will also refer to the title and ID number of the accepted paper, and each accepted paper must have one dedicated registration for the paper to be included in the proceedings.

The "REGULAR" or "FULL-TIME STUDENT" registration fee will cover all expenses for the official events during the conference, including conference package (proceedings and other accessories), ice-breaker reception, technical sessions, tea/coffee breaks, lunch, banquet and social event/technical tour.

The "ACCOMPANYING PERSON" registration fee covers only the ice- breaker reception, banquet and social event/technical tour.

FINANCIAL SUBSIDY

Iawe encourages full-time students (under 35 years of age), who are pursuing research in Wind Engineering, to participate and present papers at APCWE-VIII by providing financial subsidy. The financial subsidy includes waiver of the registration fee (US \$ 225 / ₹ 2,000 for full-time student) and free local hospitality. The young research scholar should make his/her own travel arrangements. Since the fund provided by Iawe can support only a limited number of young research scholars, the financial subsidy can be sanctioned subject to the approval of the committee. To avail the financial subsidy, kindly fill out the application form available in website: <http://apcwe8.serc.res.in>

LOCAL ORGANIZING COMMITTEE

Nagesh R. Iyer (CSIR-SERC), *Chairman*
S Gomathinayagam (C-WET), *Co-Chairman*

K Ravisankar (CSIR-SERC), *Technical Secretary*
C Jeyabal (CSIR-SERC), *Administrative Secretary*

A Abraham, CSIR-SERC
Achal Mittal, ISWE/CBRI
Antony Jeyasehar, Annamalai University
P Chellapandi, IGCAR
Devdas Menon, IIT Madras
DV Giri, IWTMA
P Harikrishna, CSIR-SERC
Jai Shankar Kumar, UltraTech
K P Jaya, Anna University
Kamal Poddar, IIT Kanpur
Kishor Kumar, JAL
T S Krishnamoorthy, CSIR-SERC
Lakshmy Parameswaran, CSIR-CRRI

S S Mani, BHEL
K Muthumani, CSIR-SERC
G S Palani, CSIR-SERC
P Paramasivam
K M Parammasivam, MIT
R Radhakrishnan, ICI
Y E A Raj, IMD
J Rajasankar, CSIR-SERC
G Ramesh Babu, CSIR-SERC
S Selvi Rajan, CSIR-SERC
B Sivarama Sarma, L&T Construction
S Thiagarajan, Fichtner
U S P Verma, NPCIL

PAPER SUBMISSION

ABSTRACT

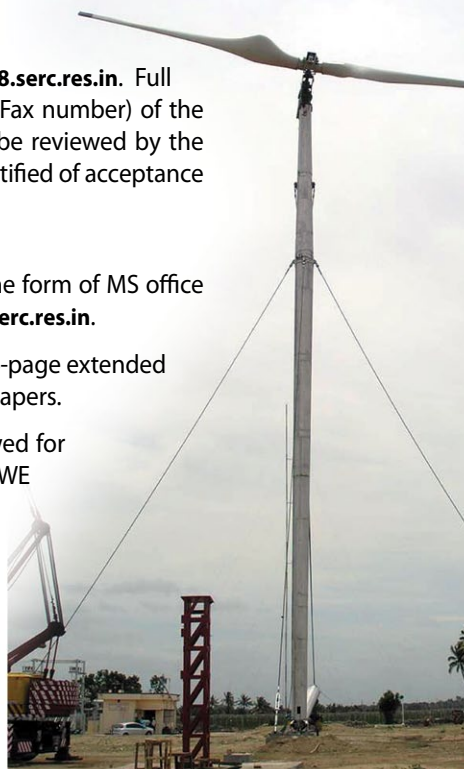
Please upload 4-page extended abstracts at <http://apcwe8.serc.res.in>. Full contact information (name, affiliation, e-mail ID and Tel/Fax number) of the corresponding author must be provided. Abstracts will be reviewed by the Technical Advisory Committee, and the authors will be notified of acceptance of abstract.

FULL-LENGTH PAPER

A maximum of 10-page full-length paper soft copy (in the form of MS office document or PDF) should be uploaded at <http://apcwe8.serc.res.in>.

Conference participants will be provided with a book of 4-page extended abstracts and a CD-ROM containing 10-page full-length papers.

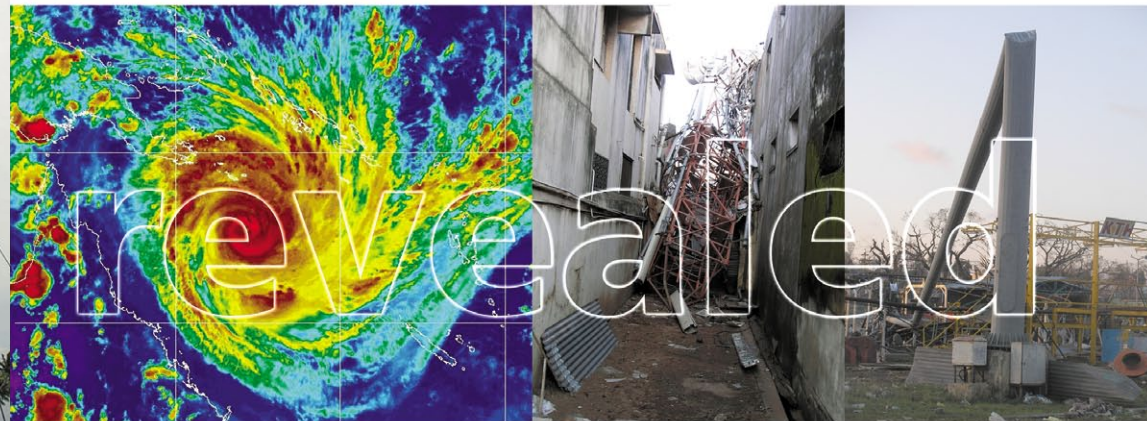
Selected papers from the conference will be peer-reviewed for publication in the Journal of Wind and Engineering (ISWE Publication)/Journal of Structural Engineering (CSIR-SERC Publication).



APCWE-VIII aims to bring together everyone involved in research, exploration, design, analysis and monitoring of issues and problems in the field of wind engineering in a single platform for enhancing international collaboration by means of exchange of views and experiences, which will lead to successful international interaction.

CSIR-Structural Engineering Research Centre (CSIR-SERC) is a constituent national laboratory of the Council of Scientific and Industrial Research (CSIR), Government of India. CSIR-SERC has been making pioneering contributions in the field of advanced structural engineering, including analysis and design of wind-sensitive structures and cyclone disaster mitigation. The Centre has established a state-of-the-art Boundary Layer Wind Tunnel (BLWT)

and full-scale experimental facilities, with sophisticated instruments such as Particle Image Velocimetry (PIV) system and Sonic Anemometers. Based on continued and concerted R&D efforts for more than two and a half decades, this Centre has significantly played a major role in the development of existing Indian Standard for wind loads IS:875 (Part-3) -1987, which is presently under revision. In recent years, research efforts are also being focused on the emerging areas of Computational Fluid Dynamics (CFD) as applied to civil engineering structures, analytical studies on wind-induced fatigue, vortex-induced oscillations on circular structures etc. to unravel the complexities of wind flow dynamics and to develop simple predictive models useful for structural design applications.



The legacy of Asia-Pacific Conference on Wind Engineering starts with the first event held at Roorkee/India, moving on to Beijing/China, Hong Kong/China, Gold Coast/Australia, Tokyo/Japan, Seoul/Korea and Taipei/Taiwan. The APCWE conference is an international event regularly convened every four years under the umbrella of International Association for Wind Engineering (IAWE), and attended by wind engineering researchers and practitioners from around Asia and Pacific regions. Outcome of these conferences has led to fine tuning of the standards and wind engineering-related codes, policy changes and, as a whole, expanded the vistas of knowledge in the field of wind engineering.

THOSE WHO CAN ATTEND...

Scientists, Academicians, Technologists, Architects and practising Engineers who deal with planning, analysis, design and construction.

CONFERENCE THEMES

- Aeroelasticity (AE)
- Bluff Body Aerodynamics (BBA)
- Boundary Layer Wind-tunnel Testing (BLWT)
- Bridge Aerodynamics (BA)
- Codes of Practice / International Standards on wind loads (CoP)
- Computational Fluid Dynamics (CFD)
- Field Measurements and Health Monitoring (FMHM)
- Low and High-rise Buildings (LHB)
- Urban Flow Dispersion Modeling (UFDm)
- Wind Engineering (WE)
- Wind Disaster Mitigation (WDM)
- Wind Energy and applications (WEg)
- Wind Environment / Human comfort (WEn)
- Wind-Structure Interaction (WSI)
- Wind Climate Assessment (WCA) & Climate Modeling (CM)
- Instrumentation and Control (IC)
- Atmospheric Modeling (AM)
- Case Studies (CS)
- Any other topic of relevance



OFFICIAL LANGUAGE

The official language of the conference is **ENGLISH**.

KEYNOTE / INVITED SPEAKERS

- **Andrzej Flaga**, Poland
- **Ahsan Kareem**, USA
- **Claudio Borri**, Italy
- **Giovanni Solari**, Italy
- **Michael Kasperski**, Germany
- **N Lakshmanan**, India
- **Partha Sarkar**, USA
- **Prem Krishna**, India
- **Rajnish Narayan Sharma**, New Zealand
- **Richard Flay**, New Zealand
- **Vijaya Gopu**, USA
- **Yukio Tamura**, Japan

INTERNATIONAL SCIENTIFIC ADVISORY BOARD

Patron: **Prof. Samir K Brahmachari**, Director General, CSIR & Secretary, DSIR

- | | |
|---|--|
| <ul style="list-style-type: none"> Acir M Loredo-Souza, Brazil Ahsan Kareem, USA Alpa Sheth, India S K Bhattacharyya, India Chang-Koon Choi, Korea Chii-Ming Cheng, Taiwan Chris Letchford, USA Chris P W Geurts, Netherlands Claudio Borri, Italy Dorothy A Reed, USA T K Datta, India Emil Simiu, USA Andrzej Flaga, Poland Gautam Biswas, India Giovanni Solari, Italy Hamid Yaghoubi, Iran John D Holmes, Australia Kenny C S Kwok, Australia N Lakshmanan, India Leighton Cochran, USA Mark Sterling, UK | <ul style="list-style-type: none"> Masaru Matsumoto, Japan Kishor C Mehta, USA Michael Kasperski, Germany Ming Gu, China Nagesh R Iyer, India R N Nayak, India H J Niemann, Germany R Panneer Selvam, USA Partha Sarkar, USA Peter C King, Canada P D Porey, India Prem Krishna, India Richard Flay, New Zealand Rudiger Hoffer, Germany Sergey Georgirvich Kuznetsov, Ukraine P Seshu, India Shuyang Cao, China Ted Stathopoulos, Canada William H Melbourne, Australia Yaujuna Ge, China Yukio Tamura, Japan |
|---|--|

